

2014 NSW Guild events

THE Pharmacy Guild's NSW branch has launched its two annual "premier pharmacy events" which will allow pharmacists to earn all of their 2014 CPD credits without taking excess time away from the pharmacy.

CPD by the Sea - NSW convention returns for the fourth year running, taking place at the Novotel Manly Pacific Hotel 21-23 Feb 2014.

And the National Convention & Exhibition (NCE) 'for everyone in pharmacy' will move to the Australian Technology Park in Eveleigh due to the redevelopment of the Sydney Convention & Exhibition Centre.

NCE '14 is on Fri 20-Sun 22 Jun, with the new venue easier to access than Darling Harbour by road and public transport as well as being closer to Sydney airport.

Pharmacists are being urged to start planning their 2014 calendar to include the events, each of which will offer up to 50% of the required Group 1 and Group 2 CPD credits.

For more information about CPD by the Sea see the website at www.cpdbythesea.com.au, while details about NCE are accessible at www.nswpharmacy-nce.com.au.

See **page four** for further info.

Telstra invests in Fred IT

THE Pharmacy Guild has signed a Memorandum of Understanding with Telstra, at the same time as announcing the communication giant's new equity partnership in the Fred IT Group.

Through its new health portfolio, Telstra has become a "major investor" in the Fred IT Group, after taking what is believed to be a 50% stake in the Guild-backed business (**PD** breaking news).

Fred IT Group CEO Paul Naismith said the new partnership "underpins Fred's core commitment to innovation and leadership for pharmacy and pharmacy customers over the long term".

The Guild, which has been an investor in Fred for about 20 years, welcomed the move, saying it will position the business to "continue to invest strongly in eHealth and IT solutions which are vital in improving patient health and safety, creating new ways for community pharmacy to service customers and manage businesses".

Guild President, Kos Sclavos, said that the Guild retains a significant investment in Fred, and views the partnership as opening further opportunities to explore national

SMART PHONE. SMARTER PHARMACY.

The faster, smarter way to
communicate with your customers

PLANS AVAILABLE. GET STARTED NOW.

eRx
EXPRESS

SCAN

SUBMIT

PICK UP

eHealth initiatives.

It's business as usual for Fred, which will continue to be run by Naismith.

"Pharmacies will continue to have access to high quality products and support," while service delivery and pricing commitments will "remain focused on finding the most efficient and competitive solutions for pharmacy," Sclavos said.

"The partnership acknowledges the importance of pharmacists in the future of health, across the spectrum of medicine management and compliance and full health records," he added.

The Guild MoU with Telstra commits the parties to work together on mutually beneficial innovative e-health solutions which provide Australians with enhanced access to health care products, services, support, advice and information "that utilises the established national infrastructure of community pharmacies".

Si Banks steps aside

SYDNEY community pharmacist and Guild National Councillor, Paul Sinclair, has been named as the new president of the NSW Branch of the Pharmacy Guild, after the retirement of long-time incumbent Si Banks who is stepping down after 19 years in the role.

Banks' time as president of the Guild's largest branch has seen many achievements, with Guild National President Kos Sclavos saying he has "figured in most of the Guild's significant wins".

Rural scholarships

APPLICATIONS for the 2014 Rural Pharmacy Scholarship Round will formally open on 14 Oct, with up to \$40,000 available to successful participants.

The scheme provides financial support to encourage students from rural and remote communities to undertake studies in pharmacy, with up to 30 full time scholarships available annually valued at \$10,000 per annum over four years.

Apply under the 'rural' initiatives section at www.5CPA.com.au.

Healthpoint diabetes referral payments

PHARMACIES which offer the Healthpoint touch screens and iPads to assess patient risk of diabetes have the opportunity to receive a payment of \$20+GST for each eligible referral to the Victorian-based *Life!* type 2 diabetes prevention program.

Healthpoint has partnered with *Life!* to enable customers to assess their risk using the Australian Type 2 Diabetes Assessment (AUSDRISK) tool.

Customers who score 12 or more are identified as being at high risk of developing type 2 diabetes and cardiovascular disease, and those who provide their details will be followed up by a health professional to discuss their risk further and how they can become involved in *Life!*

The payments are available until the end of the program in Jun 2015.

For more information on how to participate in the scheme email casefinding@diabetesvic.org.au.

Annual Subscription Offer Increase patient interaction and loyalty beyond your pharmacy

**MemoCare Annual
Subscription \$300*
+ Free Installation & Training**

- Real-time integration with dispense
- Simple enrolment process
- Manage patient replies, sent & scheduled communications
- Next & last repeat reminders

*Usage fees apply



MemoCare

Subscribe Now
click here

powering the better use of medicines

guildlink

Pharmacist Phil coming soon to your pharmacy

We now have an official 'go-live' date for medAdvisor of:

Tuesday 15th October 2013

For existing GuildCare and MemoCare pharmacies, the medAdvisor tab will appear on the GuildCare platform within the next week and you will receive an email outlining next steps to prepare for launch from 15th October 2013.

If you have not finalised your subscription for medAdvisor/MemoCare, please go to <http://www.guildlink.com.au/patient-care/purchase> or call 1300 734 869.

medAdvisor

Actavis

guildcare programs



Prolia gets TGA tick

AMGEN Australia and GlaxoSmithKline have welcomed TGA approval of a new indication for Prolia (denosumab), the only Australian approved RANK Ligand inhibitor for men with osteoporosis at increased risk of fracture.

Prolia has already been recommended to be listed on the PBS for men with a minimal trauma fracture, or men aged 70 or over with a BMD T-score of -2.5 or less.

"Osteoporosis and osteoporosis-related fractures are commonly associated with postmenopausal women with few recognising that the condition can affect men," said Professor Peter Ebeling, Head of Endocrinology, Western Health.

"In reality, one in three Australian men over the age of 60 will suffer from an osteoporosis related fracture, and for those who do suffer an osteoporosis induced fracture, their life expectancy is more likely to be reduced compared with women," he said.

Prolia is administered twice yearly as an injection.

PSA sponsors OS students

THE Pharmaceutical Society of Australia has resolved the impasse facing current international pharmacy students after the removal of pharmacy from the skilled occupations list (**PD** 04 Jun).

Under a new arrangement announced yesterday the PSA will "nominate and sponsor international pharmacy students who are PSA members and who are seeking to continue and complete their studies in Australia in 2014 and 2015," under the Subclass 402 Visa (occupational trainee stream).

PSA National President, Grant Kardachi, said the move means that the overseas students now have options to complete their training and register as pharmacists.

"They can then return to their country of origin to use these skills to pursue their careers," he said.

Kardachi said that the removal of pharmacists from the Skilled Occupations List meant that international students were no longer able to access a Subclass

Pharmacy Catalyst Retail and Buying Group

An independent group with a plan to grow sales and build professional service marketing.



Contact: Phone: 02 9248 2609
email: info@instigo.com.au www.pharmacycatalyst.com.au

485 visa which enabled them to complete their studies and register as pharmacists in Australia.

"There are more than 600 international pharmacy students affected by this change," he said.

Peak pharmacy group The Australian Pharmacy Liaison Forum has also previously expressed concern about the "lack of natural justice" for the current students due to the decision (**PD** 30 Aug).

Kardachi said that the PSA move was a further example of the society's commitment to members and to the profession, highlighting the organisation's leadership role in helping to further career of PSA member pharmacy students.

The Pharmaceutical Society of Australia has been approved as a Training and Research sponsor with the federal Department of Immigration and Citizenship, which will facilitate the move to support the international students.

RAPS workforce grant

THE Regulatory Affairs Professionals Society (RAPS) has been given an FDA grant, along with the International Food Protection Training Institute, for a 12 month project to address workforce capacity issues facing food and drug regulators around the world, particularly in low and middle income countries.

Win a Nature's Treats Gift Box



PD has teamed up with Burt's Bees this week and is giving 5 lucky readers the chance to win a Nature's Treats Gift Box (pictured above).

Burt's Bees' selection of products contains the best natural ingredients to hydrate and nourish your lips, hands & body.

To win, be the first person to send in the correct answer to the question below to: comp@pharmacydaily.com.au.

Are Burt's Bees Lip Balms 100% Natural?

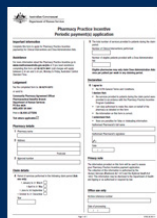
Congratulations to yesterday's lucky winner, Nicole Vizard of Forbes Hospital.



Pharmacy Practice Incentives (PPI)

PPI Claim due NOW!

Your DAA/Clinical Intervention PPI Periodic payment(s) application **MUST** be lodged with The Department of Human Services (Medicare) by **14 October 2013**



[Click to access claim form](#)

Applications received after 14 October 2013 will be rejected. Further information www.5cpa.com.au/ppi



Australian Government
Department of Health and Ageing



The Pharmacy
Guild of Australia

This Project is funded by the Australian Government Department of Health and Ageing as part of the Fifth Community Pharmacy Agreement.

Infant allergies

AT the Australasian Society of Clinical Immunology and Allergy conference last week, clinicians heard from Cochrane Review author Associate Professor John Sinn, Neonatologist, Royal North Shore Hospital Paediatrics and Child Health, and Dr Scott Dunlop, Consultant Paediatrician who highlighted that not all prebiotics are the same and there are practical implications for managing infants at risk of allergy.

To view the video **CLICK HERE**.

Looking to... Increase sales? Drive foot traffic?

The Good Price Pharmacy Warehouse model might be the right solution for you!



"There is no wonder that the Good Price Pharmacy Warehouse brand is quickly becoming a market leader, the prices are unbeatable, the Head Office support network is excellent and the stores look fantastic. Good Price Pharmacy Warehouse offers an excellent deal to both customers and franchisees, a win for all!" **S. Baxter**

To find out how Good Price can help you compete in today's changing landscape speak to Anthony Yap or Milton Burrell (07) 3907 0533

www.goodpricepharmacy.com.au



- Cost Effective
- Targeted
- Easy

Health, Beauty and New Products

Welcome to our weekly feature with all the latest health, beauty and new products for pharmacy!

Suppliers wanting to promote products in this feature should email newproducts@pharmacydaily.com.au

Cicalfate Restorative Drying Lotion

Avene's new **Cicifaltate Restorative Drying Lotion** is specifically indicated for oozing irritations in adults, children, and infants. It can be applied to the skin and mucosae and restores damaged skin quickly. The product works by soothing irritated and damaged skin, leaving a protective coating over the treated area. The lotion contains antibacterial key ingredients which protect the skin and prevent the development of germs and natural silicates dry out the skin and maintain an optimum hydration level to prevent any oozing skin irritations. Sucralfate, an original active, facilitates epidermal repair, while the combination of copper sulfate and zinc sulfate reduces the risk of bacterial proliferation. The lotion is rich in Avène Thermal Spring Water, to soothe fragile skin. On shelves this month.

Stockists: 1800 678 302

RRP: \$19.95 for 40 ml

Website: www.aveneme.com



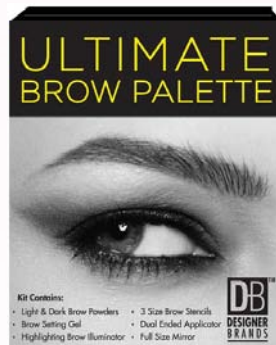
Get the ultimate for your brows

Designer Brands adds another unique product to their collection – The Ultimate Brow Palette. This gorgeous kit has all the essential tools for shaping, arching and grooming to achieve defined and flawless brows. The **Designer Brands Ultimate Brow Palette** has your brows covered with three perfect brow stencils to suit most brows. Custom blend your brows with a combination of light and dark powders. The set also contains a soft cream highlighter for enhancing the brow arch, plus brow gel to hold the shape all day long. With high tech multi-purpose dual ended applicator, use the slant-tip flat brush for blending and defining while the brow brush tames unruly brows! On counter November 2013.

Stockists: 1300 765 332

RRP: \$12.99

Website: www.dbcosmetics.com.au



Invictus Eau de Toilette, a fresh and sporty creation

Invictus, which is Latin for "invincible" and "unconquered" represents power, dynamism and energy. It captures the moment right after the end of the competition, when the champion's dreams have come true and the trophy is received. The new Invictus fragrance from Paco Rabanne opens with a fresh grapefruit and a marine accord that lead to the heart of aromatic bay leaf and Hedione jasmine and a woody base of guaiac wood, patchouli, oak moss and ambergris. On counter this month.

Stockists: 02 9662 2668

RRP: \$98.00 for 50 ml, \$129.00 for 100ml

Website: www.pacorabanne.com



Jo-Joba Company Travel Essentials

The perfect travelling companion no matter your destination, the Jojoba Company new Travel Essentials pack covers all your skin care needs enabling you to remain fresh faced no matter where your travels take you. The set includes a 5-step skin care package with handy sizes that are convenient enough to pack into carryon luggage, suitcases, weekender or gym bags.

Stockists: 02 9651 3030

RRP: \$24.95

Website: www.thejobacompany.com.au



DISPENSARY CORNER



JUST calm down, ladies.

Researchers in Sweden have found that women who suffer major stress in their 40s may be at a higher risk of developing dementia in later life.

In the study of 800 women those who had to cope with major life events such as divorce or death of a spouse were more likely to suffer Alzheimer's disease many years later.

The more stressful the events were, the higher the risk of dementia, according to a report in the *British Medical Journal*.

The authors of the study postulated that "stress hormones" may be to blame, leading to changes in brain chemistry.

ATHLETES in some cases go to extreme lengths to win, but this is getting ridiculous.

An Italian runner has been accused of using a fake penis in order to evade detection during a routine urine drug test.

Devis Licciardi was apparently caught "red handed" with the false appendage which was filled with drug-free urine, all ready to provide a legitimate sample.

He's now been summoned to face disciplinary proceedings before Italy's Olympic committee.

Licciardi's recent performances in the 3000 metre steeplechase have been described as "remarkable".

WINE drinkers are not good at estimating their consumption, according to a study by researchers from Cornell and Iowa State Universities in the USA.

A standard serving of alcohol is 5 ounces (150mL), but the scientists found that, fairly unsurprisingly, the drinkers "often overpour".

A report in *USA Today* says the study found that subjects poured 12% more wine into a wide glass than a narrow one.

They were also found to pour significantly more into a glass they were holding compared to one which was sitting on a table.



The Pharmacy
Guild of Australia

PREMIER NSW BASED PHARMACY events




CPD Credits | Networking | Products & Service Solutions

Start planning your 2014 calendar and your attendance **NOW!**

CPD by the **SEA** 
NSW CONVENTION 2014

21-23 February
Novotel Manly Pacific
www.cpdbythesea.com.au

**National
Convention &
Exhibition '14**

 for everyone in pharmacy

20-22 June
Australian Technology Park
www.nswpharmacy-nce.com.au

All enquiries to Guild Events - guildevents@nsw.guild.org.au