



PROSTATE CANCER: SYMPTOMS TO SOLUTIONS

WHERE

THE LAKES GOLF CLUB
SYDNEY

WHEN

MONDAY 21 OCTOBER 2024
TUESDAY 22 OCTOBER 2024

KEYNOTE SPEAKERS INCLUDE

Are you a pharmacist looking to expand your current scope of clinical practice with a speciality in men’s health? If so, perhaps the clinical programs offered by Mens Health Downunder (MHDU) is the place for you to start.

MHDU was established by Canberra pharmacist, Brad Butt, in 2013 to address the growing need for Australian men to have access to professional and specialist health experts. MHDU is now the largest men’s health pharmacy clinic in Australia.

Independent Pharmacies of Australia Group is proud to support the upcoming **Australasian Mens Health Downunder Conference**. This conference presents a fantastic opportunity to explore the latest advancements in men’s health and wellness.

We look forward to seeing you there.

TO LEARN MORE ABOUT OUR SPEAKERS
AND TO SECURE YOUR EARLY BIRD TICKET, VISIT



[MHDU2024.COM.AU](https://mhdud2024.com.au)

& REGISTER TODAY!

EARLY BIRD ENDS 31ST JULY



BRAD BUTT
MHDU Founder
& Pharmacist



DR MICHAEL LOWY
Sexual Health
Physician



DR MARGARET REELMAN
Clinical Psychosexual
Therapist



DR BENJAMIN NAMDARIAN
Urologist



DR SAMA BALASUBRAMANIAN
General Practitioner,
Sexual Health Physician &
Sexual Medicine Specialist



JAMIE BOULDING
Mens Health
Physiotherapist

PROUDLY SUPPORTED BY





Cal-600®
Helps build strong bones

Available from API, Symbion, Sigma & CH2

Petrus PHARMACEUTICALS
Calcium 600mg — 120 tablets

Use only as directed. Consult your healthcare professional if symptoms persist.

IPA's health focus

MEN'S health is the focus of the expert clinical program, Mens Health Downunder, being offered by the Independent Pharmacies of Australia Group (IPA).

The group is also sponsoring the Australasian Mens Health Downunder Conference in Oct this year to explore the latest advancements in male health and wellness.

See more on the **cover page**.

PSA opens new credentials

THE Pharmaceutical Society of Australia (PSA) has launched new credentials, including pathways for experienced consultant pharmacists and those seeking to expand their practice.

Enrolment is now open for the credentials - Aged Care Onsite Pharmacist and Medication Management Review (MMR).

Pharmacists with relevant experience can use the Recognition of Prior Learning (RPL) pathway to submit evidence of their qualifications and practical experience, the body explained.

PSA is also offering the MMR credential through the RPL pathway free of charge for Professional Plus members.

PSA National President A/Prof Fei Sim stated that this launch marks a significant milestone, adding, "PSA's credentialing program is built by pharmacists, for pharmacists".

"We provide a full suite of education and support to our members, from credentialing to everyday practice."

Sim emphasised that support

Chemsave savings

FOR a limited time only, Chemsave is offering a low monthly membership fee to pharmacy owners.

There are discounts on medicines, and with wholesalers - see **page three**.

Today's issue of PD

Pharmacy Daily today features two pages of the latest news, a **cover page** by **Mens Health Downunder** plus full pages from:

- Chemsave
- Glucojel



continues even after gaining credentials with regular clinical updates, professional development, practice support, and the annual Consultant Pharmacist Conference.

"We continue to invest in credentialed and consultant pharmacists, not only through a great membership product and leading training program, but also through our advocacy for the future of comprehensive medication management," Sim added.

Adj A/Prof Debbie Rigby (**pictured**) welcomed the launch, and PSA's support for credentialed and consultant pharmacists.

"I'm excited to be joining PSA to amplify the voices of consultant pharmacists and the valuable role they play in medication safety and quality use of medicines through multidisciplinary, collaborative care," Rigby concluded. *JG*

Digital journey

THE latest episode of *Your Pharmacy Career Podcast* by Raven's Recruitment will explore the rapidly evolving digital landscape.

Hosted by pharmacist Krysti-Lee Patterson, this episode features an exclusive interview with Mina Wanis, a pharmacist who has successfully transitioned into the digital health and IT sector.

The podcast takes listeners on a journey where Wanis shares her story of adaptation and innovation, highlighting the critical role of pharmacists in managing data, understanding informatics, and leading technological advancements in healthcare.

To listen to it, **CLICK HERE**.

Supporting you

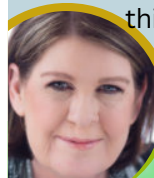
GLUCOJEL is reinvesting all its profits back into supporting community pharmacists in their businesses.

The original jelly bean's popularity increases sales as customers come in stores searching for it - see **back page**.



GAME-CHANGING PHARMACY IN A RURAL TOWN LISTING NUMBER: #SR73254

With a turnover of \$801,761 and a loyal customer base this pharmacy demonstrates it can deliver with the right pharmacist. The pharmacy is being sold with the freehold & residential and has an ROI of \$147,659.



CLICK HERE TO COMPLETE THE CONFIDENTIALITY AGREEMENT

MedView

Protecting your business and patient data 24/7



Managed services tailored for pharmacy

medview.com.au

Medicines Management 2024

14-16 November 2024
Adelaide, SA

Registration now open!

Early-bird closes Thursday 3 October

mm2024.shpa.org.au/register





Dispensary Corner

ALONGSIDE a bustling US freeway in Phoenix city, a 59-year-old homeless man, Alfred Handley, leaned back in his wheelchair.

A street medicine team was rehydrating him with an IV saline drip hanging from a pole, as cars whooshed by under the blazing 35-degree sun, reported *Yahoo News*.

Handley, nearly toothless but smiling, appreciated the new health program, Circle the City. "It's a lot better than going to the hospital," he said, recalling poor treatment at traditional clinics since being struck by a car six years ago.

The program combats life-threatening heat illness among the homeless, who accounted for nearly half of last year's 645 temperature-related deaths in Maricopa County, Arizona.

The care team searches for people in homeless encampments in dry riverbeds, sweltering alleys and along water canals in the Phoenix area.

About 15% are dehydrated enough for a saline drip.

"We go out every day and find them," said nurse practitioner Perla Puebla.

"We do their wound care, medication refills for diabetes, antibiotics, and blood pressure."

Dr Liz Frye, vice chair of the Street Medicine Institute, said, "if that's what needs to happen to keep somebody from dying, I'm all about it".

Health providers from San Diego to New York are now adapting to protect the homeless as concrete jungles continue to heat up.

Dementia tops disease list

DEMENTIA has emerged as the second leading cause of death overall, and the primary cause of death among women.

Highlighted in the just-released Australian Institute of Health and Welfare's (AIHW) *Australia's Health 2024* report, dementia is also the top disease burden for people aged 65 and older.

Dementia Australia CEO Prof Tanya Buchanan emphasised the report's significance, stating it underscores the urgent need for enhanced attention and resources for dementia.

"This report is crucial for guiding governments and the health, aged care, and disability sectors to invest



appropriately in dementia support and services," said Buchanan.

"With greater awareness of modifiable risk factors, we could delay or prevent up to 40% of dementia cases."

As the number of dementia incidents is projected to double by 2054, Buchanan called for a comprehensive National Dementia Action Plan.

"We need a clear vision for the future to advance dementia care," she said, noting that Dementia Australia and its stakeholders have contributed to the draft of the plan.

With over 421,000 Australians living with dementia and 1.6 million involved in their care, Buchanan added that her organisation was available for assistance.

"I encourage people to contact the National Dementia Helpline on 1800 100 500 or visit dementia.org.au," Buchanan commented. *JG*

Weight on meds

A STUDY published in the *Annals of Internal Medicine* found small differences in weight change among patients starting one of eight first-line antidepressants in the US.

Researchers from Harvard Medical School and the Pilgrim Health Care Institute analysed electronic health records of over 183,000 adults.

Bupropion was consistently linked to the least weight gain.

At six months, users of escitalopram, paroxetine, and duloxetine gained 0.3 to 0.4 kg more and were 10-15% more likely to gain at least 5% of their baseline weight compared to sertraline users.

However, Bupropion users gained 0.22kg less and were 15% less likely to gain 5% of their baseline weight.

The researchers said these findings are crucial as concerns about weight gain can impact medication adherence.

New govt bodies

TWO new independent peak bodies have been set up by the Federal govt to represent people with lived experience of mental illness so that they are included in decision making at a national level.

The two new groups include the National Mental Health Consumer Alliance and the National Mental Health Careers, Family and Kin peak body.

The bodies will be established by the National Mental Health Consumer Alliance and Mental Health Carers Australia respectively.

The organisations selected for a competitive grant have been allocated \$7.5m over three years for their establishment and early operation.

Pharmacist and Assistant Mental Health Minister Emma McBride said, "the two organisations selected, led by people with lived experience, to establish the new peak bodies, will embed their leadership and perspectives through the mental health system".

Melville Pharmacy Group

Rare Career Opportunity

PHARMACIST MANAGER

Location Waikerie (1hr from Barossa Valley), SA
Salary \$140,000++ (Full-time)

- Outstanding earnings, benefits & incentives.
- Leading independent pharmacy group.
- Pathway to pharmacy ownership.
- Pristine location & sought after lifestyle.

E: recruitment@melville.house [...Learn More](#)

Secure your financial freedom and create a dream lifestyle.

Do The Math(s)!

Chemsave

Low Chemsave Monthly Membership Fee

- \$ 340 Catalogue pre-order rebates
- \$ 795 Dispense Assist subscription
- \$ 10 Pointers subscription
- \$ 550 Bonus stock

SUBTOTAL = Save \$ 1,695 per month
(\$ 20,340 per year)

- + Top discounts on 7000+ OTC products
- + Top discounts on 1000+ Rx products
- + Top discounts at wholesalers
- + Free point-of-sale support
- + Free merchandising
- + Free pricing servicing
- + Free digital marketing
- + Free Nostradata

GRAND TOTAL = BIG SAVINGS!

YOUR
BIG
SAVINGS
CHEMIST

ASK US ABOUT
OUR LIMITED-TIME
SPECIAL OFFER.

YOU DON'T WANT TO
MISS OUT ON THIS!



VIC, SA, WA, TAS & NT

Michael Story
0425 820 160
michaelstory@chemsave.com.au



NSW, QLD & ACT

Simon Metcalfe
0499 208 182
simonmetcalfe@chemsave.com.au



OUR PROFIT IS YOUR PROFIT.

Not only is Australia's favourite jelly bean the biggest selling confectionery in pharmacies, but all the profits we make go straight back into the Guild, to support community pharmacies like yours.

Support the beans that support Australian pharmacies.



GLUCOJEL™

The Original Pharmacy Jelly Bean