

## Today's issue of PD

*Pharmacy Daily* today features three pages of news, plus a full page from **Maxofen**.

## New pain solution

**NOVA** Pharmaceuticals is highlighting Maxofen, its new double-action pain solution combining 500mg paracetamol and 200mg ibuprofen - more on **page four**.

## Sunscreen recalls

**THE** Therapeutic Goods Administration (TGA) has issued recall alerts for several sunscreen products.

Edgewell Personal Care Australia Pty Ltd is recalling all unexpired batches of Banana Boat Baby Zinc Sunscreen Lotion SPF 50+ and Hawaiian Tropic Mineral Zinc Sunscreen Lotion SPF 50+ - more **HERE**.

Additionally, Gem Care Products Pty Ltd is recalling all unexpired batches of its Solar Screen Mineral Zinc Hydrating Sunscreen Lotion SPF 50+ in both the face and body variants - details **HERE**.

## Guild Victoria welcomes ADHD reforms

**THE** Pharmacy Guild of Australia, Victoria Branch, has welcomed the Victorian Government's announcement that GPs who undertake accredited training will be able to diagnose and treat ADHD in children and adults.

The decision brings Victoria in line with Queensland, NSW, SA and WA, which are already phasing in similar reforms.

"This important decision

...will ensure patients are able to access the treatment and support they need without costly referrals or long waits," said the Guild's Victoria Branch President, George Tambassis.

"We have seen how successful this approach has been in community pharmacy and it's pleasing to see other healthcare providers being able to expand the range of services offered," he added.

**THE** Pharmacy Guild of Australia and Rural Pharmacists Australia have launched the Rural Pharmacy Forum Bursary to help eligible rural pharmacists attend APP2026, which takes place from 12-14 Mar on the Gold Coast.

Valued at \$5,000, the funding is designed to cover essential expenses such as conference registration, travel, accommodation and locum support, ensuring that the recipient can fully participate without financial barriers.

"We're proud to support rural pharmacists through initiatives like this bursary and an important focus on rural pharmacy during APP," National President Pharmacy Guild of Australia, Professor Trent Twomey said.

"These programs remove barriers and celebrate the incredible work being done in rural and remote communities," he added.

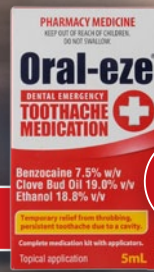
The initiative is open to single-pharmacist owners who work and reside in a rural or remote area (MMM 3-7), and have never attended APP before.

Bursary applications, which are sponsored by Pharmaceutical Defence Limited (PDL), close 5pm AEDT on 09 Feb - to find out more

## Don't suffer the pain of toothache.

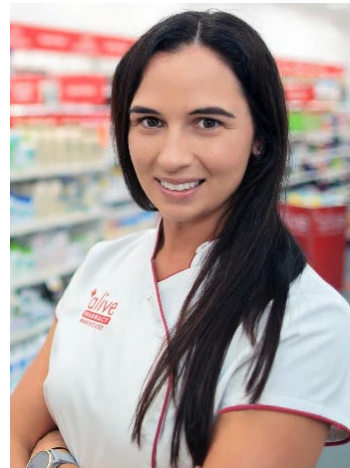
Available from Symbion, Sigma, API & CH2

Always read the label and follow the directions for use.



For the temporary relief of pain from toothache.

## Guild's \$5k bursary for rural pharmacists



or apply, **CLICK HERE**.

**MEANWHILE**, APP2026 will see the return of the Rural Pharmacy Forum, with the theme 'Insight to impact: Advancing rural health through community pharmacy'.

The forum will discuss the unique challenges faced by rural and regional communities in accessing health care, and how addressing these challenges is essential to shaping the health and wellbeing of every Australian, regardless of where they live.

Georgina Twomey (**pictured**), Chair of the Rural Pharmacist Alliance, said: "Being a pharmacy

owner in rural Australia brings unique challenges and perspectives, which will be incredibly valuable at APP's Rural Pharmacy Forum."

"We know rural pharmacists can feel isolated, and this bursary aims to encourage face-to-face engagement between like-minded rural pharmacists."

The 'I Love Rural Pharmacy' video competition also returns in 2026, celebrating the innovation and resilience of rural pharmacies across Australia.

Entry is free, and only open to a community pharmacy employee or community pharmacy owner of a Modified Monash Model (MMM) 2-7 pharmacy.

Participants are invited to submit a short video showcasing how they've turned ideas into action, whether tackling workforce shortages, improving access to health professionals, or overcoming service delivery barriers.

The winner will score a prize package that supports implementation of full scope, and is valued at \$4,000, sponsored by Raven's Recruitment.

Videos must be submitted by 5pm AEDT Mon 16 Feb - **CLICK HERE** to find out more. *JM*

## FRED Marketplace

Find the right integration for your pharmacy's needs.

Visit Fred Marketplace



## Hygienic no-touch application that kills the fungus that causes athlete's foot

To find out more, visit [lamisil.com.au](http://lamisil.com.au) or call 02 8878 9777 to talk to your Pharmabroker representative.

Always read the label and follow the directions for use.



Ideal for awkward angles & hairy skin

**ARE YOU A HEALTH PROFESSIONAL?  
ARE YOUR DETAILS CORRECT?**

As a health professional, did you receive today's special edition?  
Click here to change your subscription details via email.



## APP exhibition sold out



**THE** Australasian Pharmacy Professional Conference and Trade Exhibition (APP) has announced its 2026 Trade Exhibition is now fully allocated, with exhibition stands sold out for next month's event.

This year's Trade Exhibition will showcase a wide variety of businesses, ranging from prescription and over-the-counter medicine providers, software providers, complementary medicines suppliers, finance companies, and more.

The exhibition hall will shine a spotlight on the theme 'Beyond the Script', transforming the space into a showcase of cutting-edge technology, emerging service models, business solutions, and the latest innovations shaping the future of community pharmacy.

"We have over 250 companies participating in this year's Trade Exhibition," stated APP Chairman Kos Sclavos.

"With a wide variety of exhibitors and over 450 stands, 32 new exhibitors, and more than 700 brands being showcased, there's sure to be something of interest for all of our delegates."

"Whether delegates are looking for inspiration, exploring strategic partnerships, or wanting to stay ahead of the industry's rapid evolution, this year's Trade Exhibition delivers an unmatched opportunity to connect, discover, and grow," Sclavos added.

APP2026 will be held on the Gold Coast from 12-14 Mar.

**CLICK HERE** to browse the full exhibitor directory. *JM*

## Gap in First Nations' blood cancer treatment

**THE** Leukaemia Foundation has shared findings that First Nations Australians face a greater risk of dying from blood cancer and have less access to the appropriate treatment or care.

Research led by the University of Queensland's First Nations Cancer and Wellbeing Research team has found that First Nations people are in environments that have low awareness of the early symptoms, receive information that is untailored, culturally inappropriate or incorrect, as well as the fact that they live

in areas that are long distances from specialist care.

It has also been proven that many professionals in specialist care units lack the sufficient resources to provide treatment that is tailored to the needs of First Nations patients,

The research is set to be used as a roadmap on how to improve outcomes for Indigenous Australians affected from blood cancer, which stretches beyond medical treatment alone.

The push will also be supported by The World's Greatest Shave. *JB*

## Advancing responsible AI in healthcare

**THE** Digital Health Cooperative Research Centre (DHCRC), the University of Technology Sydney, and Ausintelli Technology have begun the second phase of a national research effort to advance the use of responsible AI in healthcare.

The organisations are working together to adapt and operationalise the OECD AI Classification Framework (AICF) for use in Australia's healthcare sector, with the aim of enhancing clinical care and improving efficiency in practical, standardised ways.

The initiative builds on phase one of DHCRC's research project, which localised the AI Classification Framework (AICF) for Australian SMEs and delivered a prototype web-based tool to support early-stage AI categorisation in healthcare.

The new phase will refine and enhance the tool's functionality and develop a quantifiable, logic-based matrix capable of delivering more granular classification of AI systems used in medical and clinical contexts.

As well as updating the existing framework to reflect current regulatory, operational, and practical needs across the sector, the project will also incorporate measurable dimensions relating to risk, trustworthiness, uncertainty, and explainability.

The refinements will then be built into a working decision model and tested using real-



world case studies to ensure it is accurate and easy to use.

"Ensuring AI is safe, transparent, and trustworthy in healthcare requires more than technical excellence," said DHCRC CEO Annette Schmiede.

"It demands governance models that reflect clinical realities and can be used consistently across diverse settings.

"This project brings together the right expertise to build a practical, scalable approach to assessing AI risk and trustworthiness."

The project's outcomes will help shape an improved prototype tool that supports consistent procurement, governance, and assessment of AI applications.

The tool could also form the basis of future registries that track key information about AI systems used in clinical care, improving transparency, and supporting safer deployment across the sector. *JM*



Australasian Pharmacy Professional Conference and Trade Exhibition

# 5 weeks to go until APP2026!

**BOOK NOW**

Brought to you by



The Pharmacy Guild of Australia





**SPECIAL REPORT  
OUT NOW**

*A year in review:  
2025's biggest news*

➔ **CLICK HERE TO CHECK IT OUT**



## Dispensary Corner

**IF YOU** thought the healthiest meat options stopped at chicken breast and tenderloin steak, think again.

According to nutritional therapist and member of the British Association of Nutrition and Lifestyle Medicine, Amanda Serif, crocodile and ostrich are surprisingly good choices.

It turns out that in addition to being adventurous menu options, these exotic meats are lean and nutrient-packed.

The fact that crocodiles are cold-blooded means their meat has significantly less fat than beef or pork, with the added bonus of omega-3 fatty acids, iron, and potassium.

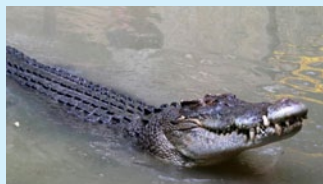
One hundred grams of crocodile meat is 166cals and contains 30g of protein and 5g of fat.

Ostrich is another smart option for those willing to step outside the box.

"There was a boom in ostrich farming in the 1990s and the meat was marketed as a healthy alternative to beef because it is so low in fat and high in iron," Serif said.

"But for some reason, it never really caught on - perhaps people were confused by a red meat from a bird; they didn't really know what to do with it."

Serif's other less-common meat recommendations included goat, buffalo, rabbit,



## PRODUCT SPOTLIGHT

Suppliers wanting to promote products in this feature should email [advertising@pharmacydaily.com.au](mailto:advertising@pharmacydaily.com.au)

### Smart HEAT soothes insect bites & stings effectively on the go

ThermiQ Insect Bite Healer delivers rapid itch relief from mosquito bites. Clinically shown to reduce itch by 57% within one minute and 81% within 5–10 minutes (Metz et al., 2023).

Powered by your smartphone and attached to your keyring, ThermiQ uses brief, concentrated heat to denature proteins found in insect venom & saliva as well as activate TRPV1 receptors, relieving itch, pain and swelling from bites and stings.

Deals available on CDU's (12 pcs).

**RRP:** \$32.95

**Stock enquiries:** API 96052, CH2 2957308, Symbion 860573

**Website:** [CLICK HERE](#) for more information



### Mag-Sup powder - a better way to absorb magnesium

Mag-Sup powder is a high absorption magnesium supplement for use in magnesium deficiencies. It contains magnesium aspartate which has increased bioavailability compared to other forms of magnesium. Magnesium aspartate has better oral absorption than magnesium citrate, magnesium glycinate, magnesium chloride and magnesium oxide.

- High dose, once a day
- Rapidly absorbed
- Natural forest berry flavour
- Up to 300mg elemental magnesium per day
- Contains no artificial preservatives, colours or flavours

Available in 200g packs equivalent to 40 doses.

**Supplier:** Available from Symbion, Sigma, API & CH2.

Contact your Clear Sales representative on 1800 640 043 for special deals.

**RRP:** \$21.57

**Website:** [CLICK HERE](#) for more information





NEW

**MAX**imise your day.  
Minimise your pain.

# MAXOFEN<sup>®</sup>

**Paracetamol 500mg & Ibuprofen 200mg**



Combines the efficacy of paracetamol and ibuprofen to offer  
**DOUBLE ACTION PAIN RELIEF** in a single, convenient capsule-shaped tablet

**Available in 12 & 30 tablets**



Ask your pharmacist about this product. Always read the label and follow the directions.  
Read the warnings before purchase. Incorrect use could be harmful. M070725aS31.1  
Suite 305, 10 Norbrik Drive Bella Vista NSW 2153  
[orders@novapharm.com.au](mailto:orders@novapharm.com.au)